



**Don & Low**  
MEMBER OF THRACE GROUP

# > Lotrak<sup>®</sup> Reinforcing Geotextiles

## Reinforcing Geotextiles

Lotrak<sup>®</sup> reinforcing grades differ dramatically from any other standard woven geotextile. Each grade is designed to offer three functions – reinforcement, separation and filtration, in one geotextile. Based on enhancement of a well-established manufacturing process, the proven benefits of basic separation and filtration are already inherent to each grade.

Lotrak<sup>®</sup> 25R, 50R and 70R are specifically manufactured to provide a high strength and demonstrate improved performance over standard geogrids.



*Lotrak<sup>®</sup> reinforcing grades for wind farm access roads*



**Don & Low**  
MEMBER OF THRACE GROUP

# > Lotrak® Reinforcing Geotextiles

All Lotrak® reinforcing grades are designed to provide higher tensile stiffness for unpaved road applications, typically found in sites suitable for wind farm construction. Lotrak® reinforcing grades act as the reinforcement, separator and filtration membrane, providing all functions in one geotextile, and eliminating the need for multiple products.

These ground conditions often require the use of a geogrid, and this can lead to the use of an additional filter geotextile. The special properties of the Lotrak® reinforcing grades immediately offer performance advantages, but there are also clear cost benefits. These grades allow for greater flexibility in the choice of stone or capping materials, which can be a distinct advantage.

## **Key benefits of the Lotrak® Reinforcing Geotextiles:**

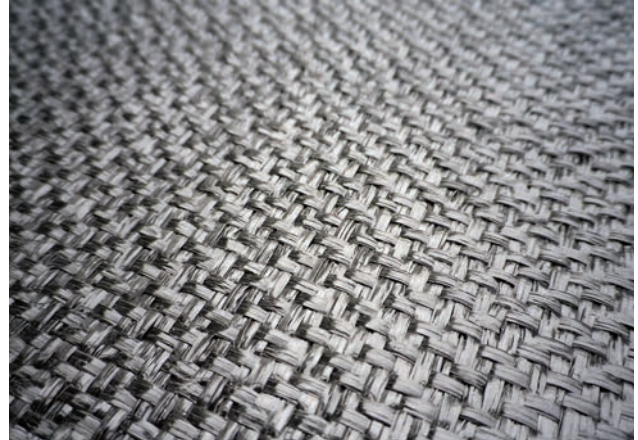
- Reinforcement, separation and filtration in one geotextile
- High strength and low strain
- High tensile stiffness
- Simple, cost effective, design component
- Manufactured under ISO Quality Management and the Construction Products Regulation

For more information, please contact us at:

Tel: + 44 (0) 1307 452200

Web: [www.donlow.co.uk](http://www.donlow.co.uk)

Email: [enquiries@donlow.co.uk](mailto:enquiries@donlow.co.uk)



*Lotrak® 70R*



*Lotrak® 50R at Manchester airport*



*Installation of Lotrak® 50R*